



Queen of Hearts, Balmy Beach



Kailee Hargest – Nursery Supervisor

After completing her ECE at Georgian College and becoming registered as an RECE, Kailee joined Queen of Hearts in September 2016 as an assistant teacher. Within a short period of time Kailee took lead in her own classroom and joining the Queen of Hearts Employee Training Program was able to develop her skills and expand on her management experience which she continues to do. As Supervisor she leads a team of six teachers.

A message from Ms Kailee

Honestly, I can't think of anything else I would rather do than work in child care. This was definitely the right career choice for me. The children, the families and the wonderful Queen of Hearts team make my career in childcare the best.



Heather Funston – Assistant Supervisor

Joining Queen of Hearts in February, Heather has brought lots of child care experience to our Nursery School. Moving to the area from Cambridge with her partner and young daughter she has made her home in our beautiful county. Graduating from Conestoga College and a registered RECE, her enthusiasm and warmth is enjoyed by the Mad Hatters

A message from Ms Heather

Working with children feels like a vocation that was just meant to be. I have enjoyed moving into a more structured and calm environment at Queen of Hearts and thrilled to see the children grow in confidence and ability with each day.

**Madame Jordan Collins – French and Music Instructor**

Mme Jordan works with all our Mad Hatter student's across our three schools to build a love and enthusiasm for both the French language and the international language of music. As an Ontario Certified Teacher, she's taught a variety of age groups from Kindergarten to Grade 8 in French Immersion, Core French and Music program settings.

A message from Mme Jordan

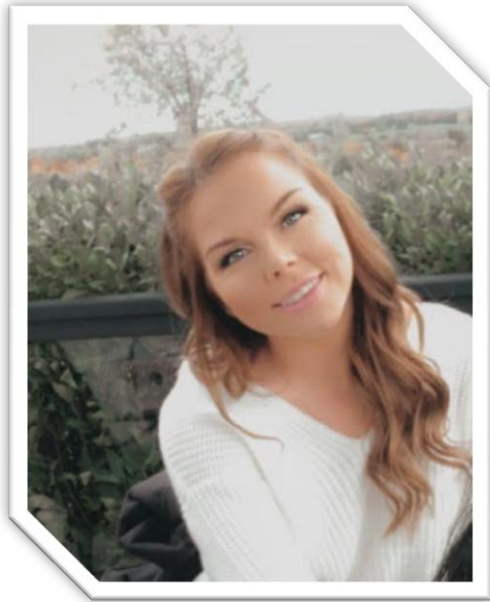
I knew that I wanted to focus my teaching with the younger grades, and jumped at the opportunity to take on this position as I can help to instill the love of languages and music at a young age.

**Mr Jesse Tilson – Science and Environment Teacher**

Jesse has many years of teaching and coaching children at Camp Presqu'île located in Kemble where he coordinated, developed, and facilitated a Leader in Training/ Counsellor Training program as well as one to one support work for campers with special needs. Recently he worked at a local child care centre and their school age programs. Jesse joined Queen of Hearts in November 2020 to work with our preschool children and run the science and environment program.

A message from Mr Jesse

My mission has and always will be that the care and compassion of every young mind that I encounter be given equal and the utmost attention. I have a gigantic heart for children, teaching, and coaching for as long as I can remember and am delighted to have the opportunity of sharing the wonderful world of science with our young people.



Brianna Hammill

Brianna has been with Queen of Hearts since January 2017 and completed her ECE through the Queen of Hearts and Georgian College Apprenticeship program. Brianna graduated in 2019 and is RECE. Having been in various positions in Queen of Hearts Nursery Schools throughout her apprenticeship she now leads a team of two teachers in our White Rabbit Classroom at Balmy Beach. Her love of children and her continuous patience and understanding makes her a favourite with our little toddlers.

A message from Ms Brianna

The bond you develop as a teacher with the children in your care is incredible. My day is spent teaching and bonding with these amazing human beings. It doesn't get much better than this.



Tristin Tollett

Starting off in our White Rabbit Classroom under Brianna, Tristin quickly showed her competency and love of teaching. Having little ones of her own, her love and encouragement for our preschoolers make them eager and enthusiastic young learners. Tristin is looking to join the Queen of Hearts Apprenticeship program in 2021

A message from Ms Tristin

I am so lucky to have found a role and job I love. The days spent with the little children goes so quickly. I am looking forward to what the future brings.



Michelle Middlebro

Michelle joined Queen of Hearts in September 2020. Originally trained and practiced as a RPN. She graduated in 2001 and worked in the Community. Michelle's role was to care for people in their own homes. Moving to Queen of Hearts she was able to bring those skills to the Nursery School setting. Supporting the teachers and interacting with the children she has quickly become part of the team.

A message from Ms Michelle

I just LOVE being at Queen of Hearts, being part of the little one's lives just makes my day. The thought that actions I may do during my working day could have a lasting impact on their lives makes my day amazing. They have so much energy and keep me busy and on my toes.



Alesha Doran

Alesha studied at Trent University and achieved a BA in Women's Studies before moving back to Owen Sound and joining the Salvation Army where she completed her ECE before moving to join the Queen of Hearts team in April 2015. With her wealth of experience and being a much loved teacher, Alesha leads a White Rabbit Classroom in Queen of Hearts, Owen Sound but also supports the Balmy Beach team when needed.

A message from Ms Alesha

Working at Queen of Hearts I learn something new from the children every day and I love to watch them grow and develop throughout their time with us. I particularly enjoy our outside learning and how it's incorporated into the children's day



Grace Holyome

Grace started with Queen of Hearts in 2018. She is currently enrolled in Fanshawe College taking the online Early Childhood Education course. Her time is split during the week days taking part in the college program and working in both Nursery Schools and at the QYC Before and After School program

A message from Ms Grace

There is so much I enjoy about Queen of Hearts. It is a wonderful place to work. My colleagues are amazing and the children and families are the best. I am so really lucky to be a part of this school.